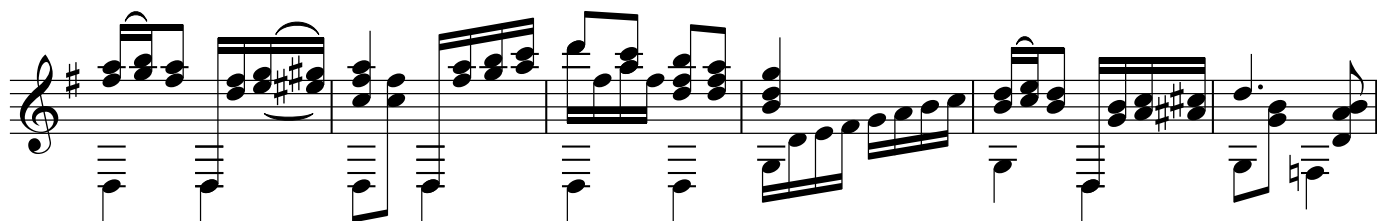
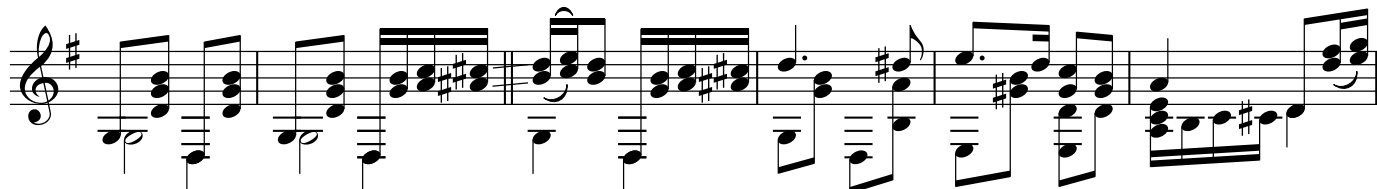
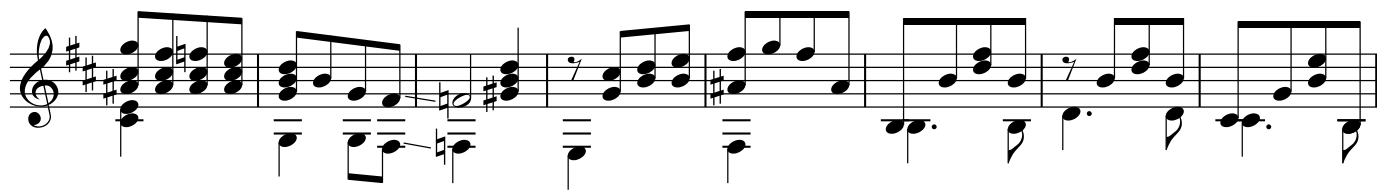
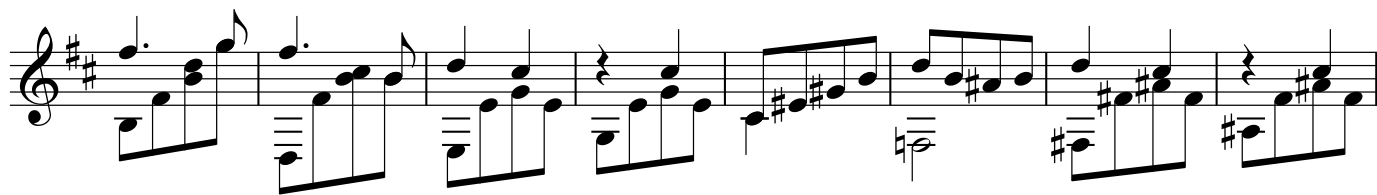
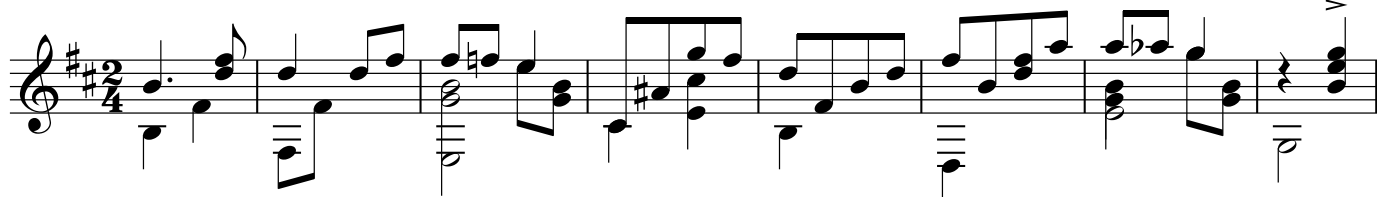


Цыганская плясовая

муз. С. Бугачевского
обр. В. Перова



First musical staff, featuring a treble clef and a key signature of one sharp (F#). The melody consists of eighth and sixteenth notes, with some chords. The bass line is composed of quarter and eighth notes.

Second musical staff, continuing the melody and bass line from the first staff. It includes dynamic markings such as accents (v) and slurs.

Third musical staff, featuring a first ending (1.) and a second ending (2.) marked with repeat signs. The notation includes various rhythmic values and chordal structures.

Fourth musical staff, continuing the musical piece with complex rhythmic patterns and chordal accompaniment.

Fifth musical staff, the final line on the page, ending with a double bar line. The label "Фл.12" is positioned at the end of the staff.