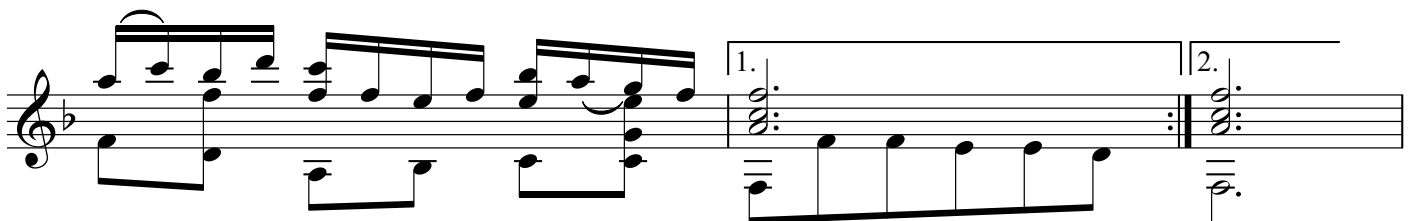
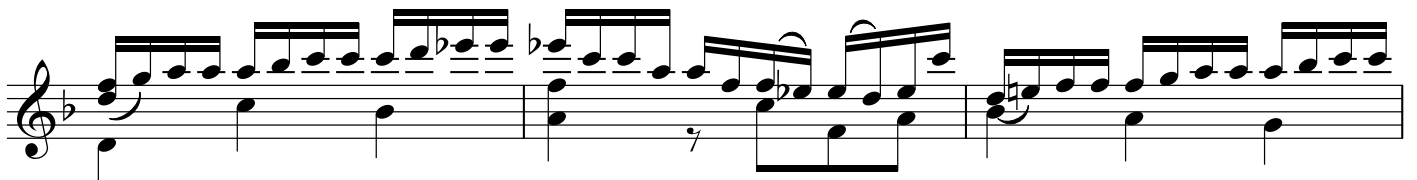
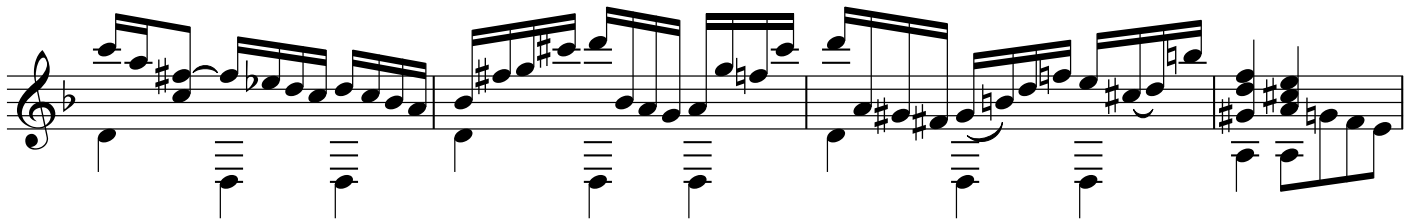
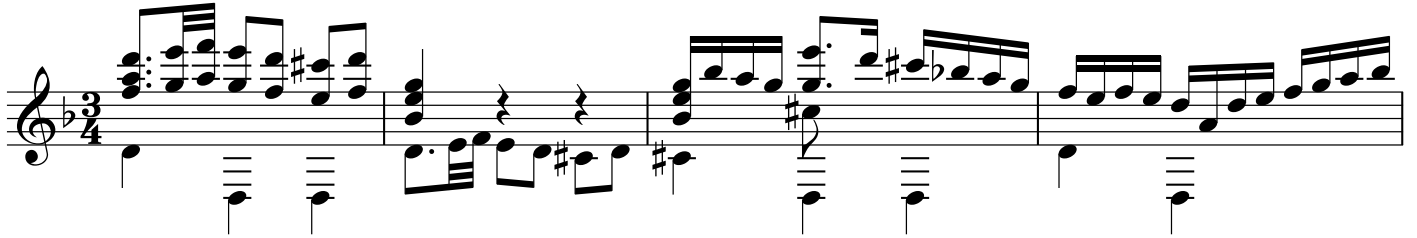


Сарабанда

обр. для 7-стр. гитары
В. Перов

И. С. Бах



The first staff of music begins with a treble clef and a key signature of one flat (B-flat). It features a complex rhythmic pattern with eighth and sixteenth notes, including triplets and slurs. The melody is intricate, with various accidentals and dynamic markings.

The second staff continues the musical piece, maintaining the same key signature and rhythmic complexity. It includes several slurs and accents, with a mix of eighth and sixteenth notes.

The third staff shows further development of the melody, with a focus on eighth-note patterns and some sixteenth-note runs. The key signature remains consistent.

The fourth staff continues the melodic line, featuring a mix of eighth and sixteenth notes with various accidentals and slurs.

The fifth staff concludes the main section of the piece. It includes first and second endings, indicated by '1.' and '2.' above the staff. The first ending leads back to an earlier part of the piece, while the second ending provides a final resolution.

A small, final musical staff at the bottom right of the page, starting with a treble clef and a key signature of one flat. It contains a short melodic phrase with a slur and a fermata, ending with a double bar line.