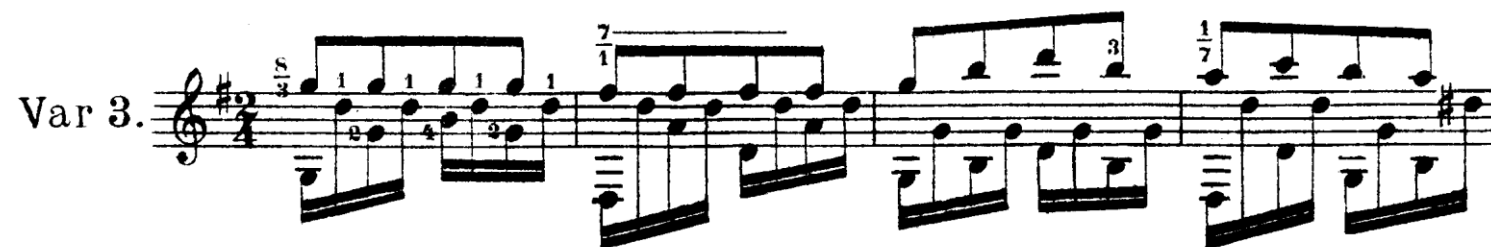
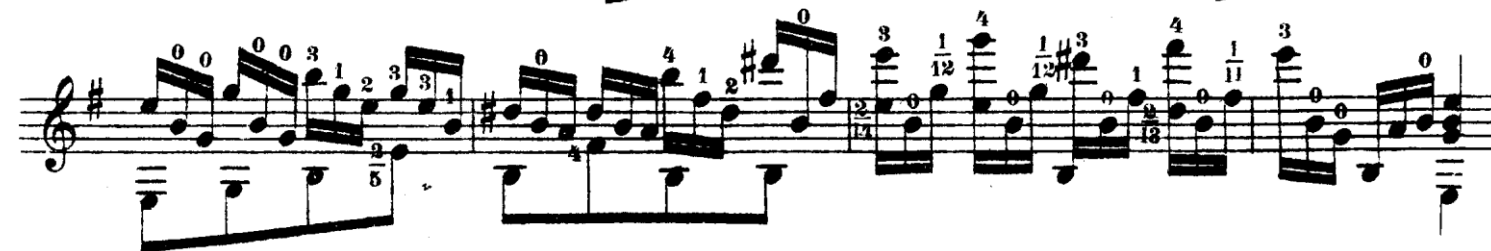
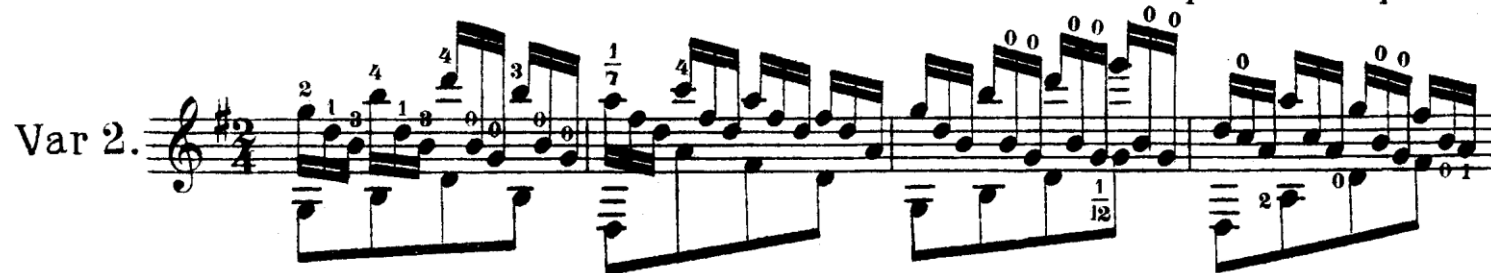


ПРИ ДОЛИНУШКЪ СТОЯЛА.

РУС. ПЪСНЯ.

Andante.

Павла Бѣлошена.



A musical staff in treble clef with a key signature of one sharp (F#). The staff contains guitar tablature with fret numbers (1, 2, 3, 4) and rhythmic notation. The music is written in a style typical of early 20th-century guitar sheet music.

Var 4.

A musical staff for Variation 4, starting with a 4/4 time signature. It features guitar tablature with fret numbers (1, 2, 3, 4) and rhythmic notation. The staff includes a large bracketed section with a 2/8 time signature and another section with a 2/7 time signature.

A musical staff with guitar tablature and fret numbers (1, 2, 3, 4). It includes a large bracketed section with a 2/8 time signature and another section with a 2/7 time signature.

A musical staff with guitar tablature and fret numbers (1, 2, 3, 4). It includes a large bracketed section with a 2/8 time signature and another section with a 2/7 time signature.

A musical staff with guitar tablature and fret numbers (1, 2, 3, 4). It includes a large bracketed section with a 2/8 time signature and another section with a 2/7 time signature.

Thema. Oct. harm. ad libitum.

A musical staff in treble clef with a key signature of one sharp (F#) and a 4/4 time signature. It contains a melodic line with eighth and sixteenth notes.

loco

A musical staff in treble clef with a key signature of one sharp (F#) and a 4/4 time signature. It contains a melodic line with eighth and sixteenth notes. The staff ends with the word "Fine." and a double bar line.